



GAT MONTHLY MEMBERSHIP PROGRESS REPORT

Results as of: 3/31/2023

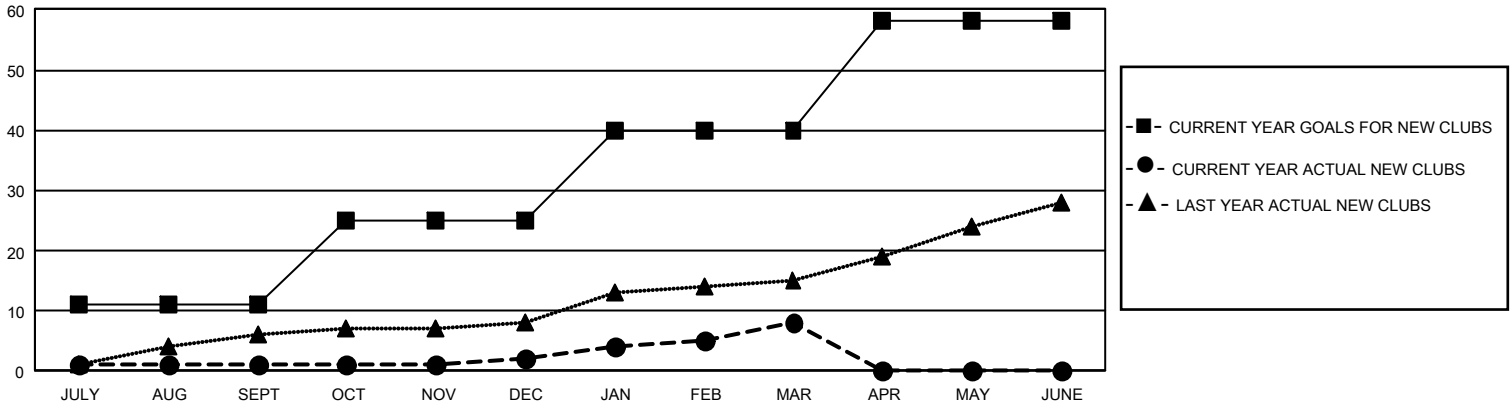
GMT Constitutional Area 4, Group F

REPORT DOES NOT INCLUDE CLUBS IN UNDISTRICTED AREAS.

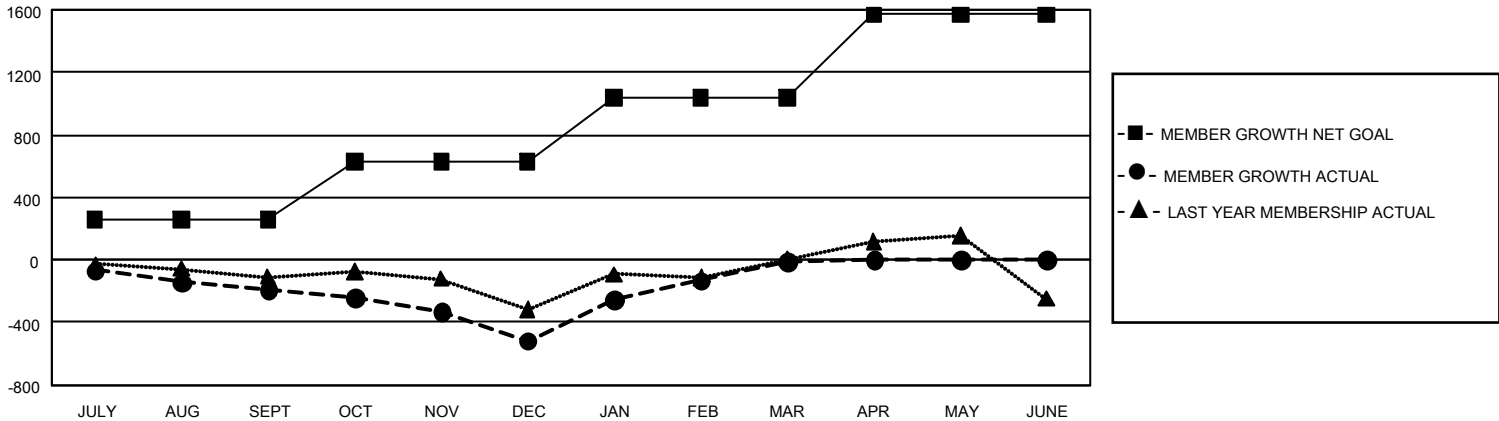
Clubs			
RESULTS FOR 2022-2023			
QUARTER	NEW CLUB GOAL	NEW CLUBS	DROPPED CLUBS
JULY/AUG/SEPT	33	1	6
OCT/NOV/DEC	42	1	4
JAN/FEB/MAR	45	6	1
APR/MAY/JUNE	54	0	0

Members			
RESULTS FOR 2022-2023			
QUARTER	MEMBER GROWTH NET GOAL	MEMBER GROWTH ACTUAL	DROPPED MEMBERS ACTUAL (including transfers)
JULY/AUG/SEPT	257	623	721
OCT/NOV/DEC	374	1,005	1,215
JAN/FEB/MAR	409	1,233	647
APR/MAY/JUNE	531	0	0

GOALS AND ACTUAL NEW CLUBS CUMULATIVE



GOALS AND ACTUAL MEMBERS CUMULATIVE



DROPPED CLUBS: 11	853 CLUBS OF 1,569 ADDED 1 OR MORE NEW MEMBERS	<u>GENDER DISTRIBUTION</u>	
		MALE	29,588 (68.28%)
<u>DROPPED MEMBERS</u>	CLICK HERE FOR CUMULATIVE MEMBERSHIP DATA	FEMALE	13,742 (31.71%)
		NON BINARY	0 (0.00%)
		PREFER NOT TO ANSWER	6 (0.01%)
		TOTAL FAMILY UNIT MEMBERS	3,597
DECEASED	354	FAMILY MEMBERS PAYING HALF DUES	1,865
CLUB CANCELLED	84		
OTHER	2,146		
TOTAL	2,584		